

Environmental Impact Assessment Report

Cummeennabuddoge Wind Farm

Technical Appendix 6-1: Candidate Turbine Wirelines

Cummeennabuddoge Wind (DAC)

September 2024



Contents

Figures

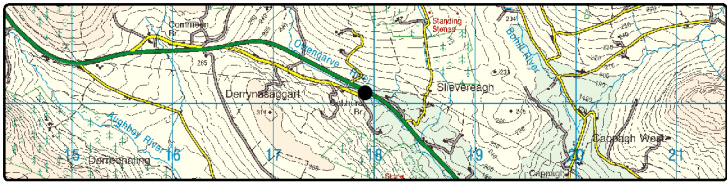
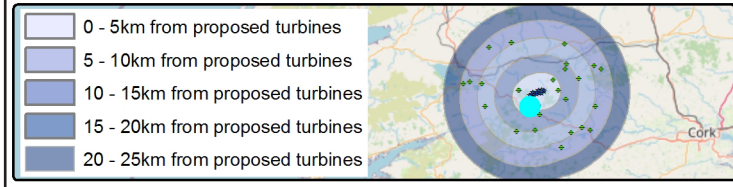
Figure 1:	Viewpoint 3	1
Figure 2:	Viewpoint 5	2
Figure 3:	Viewpoint 10	3
Figure 4:	Viewpoint 11	4



Cummeennabuddoge Wind Farm – Visual Impact Assessment

(VRP 3) Figure 1

View from the N22 (scenic route), in the townland of Derrynasaggart



Viewing Instructions

Angle of View of Panorama: 53.5° (planar projection)

Principal Distance (printed at 84 x 29.7cm): 81.25cm

Viewpoint Location & Capture Information

Location (ITM): 517878.29, 579174.95

Camera Level (Metres Above Ordnance Datum): 192.1

Date & Time: 05/05/2021, 6:24pm

Weather Conditions: Sunny, Intermittent Clouds

Visibility Information

Distance to Nearest Proposed Turbine (km): 2.8

Nearest Turbine: T 16

Number of Proposed Nacelles Visible: 0

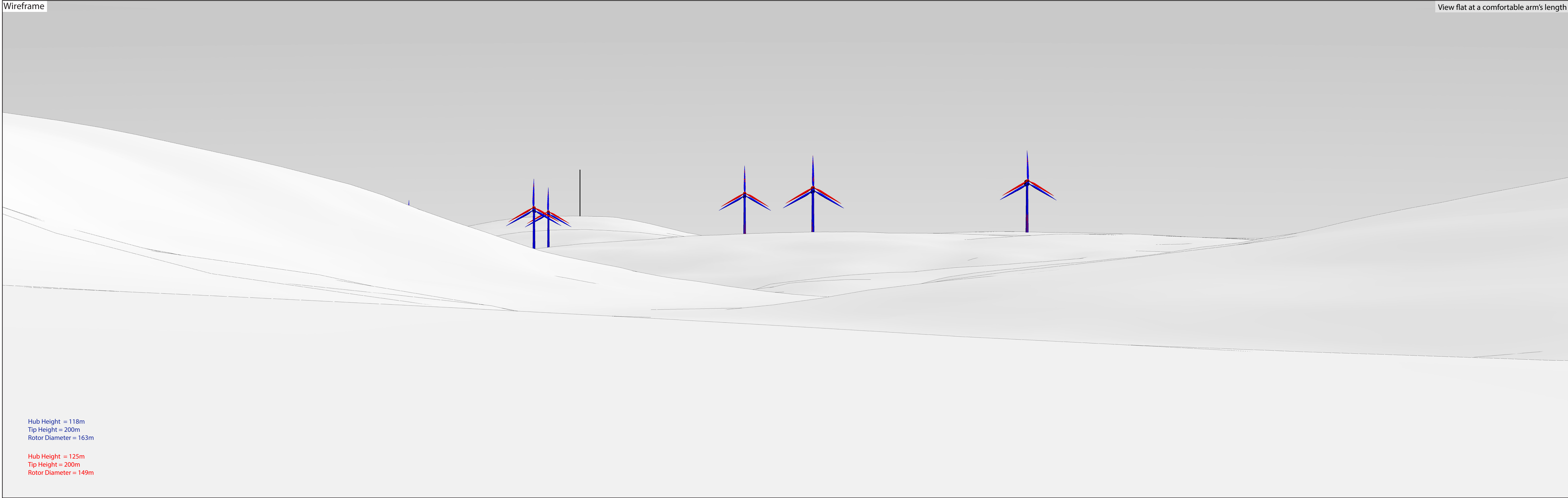
Direction of View (From Grid North): 195°

Camera Information

Camera: Canon 5D Mark IV

Lens: Canon EF 50mm f/1.4 USM

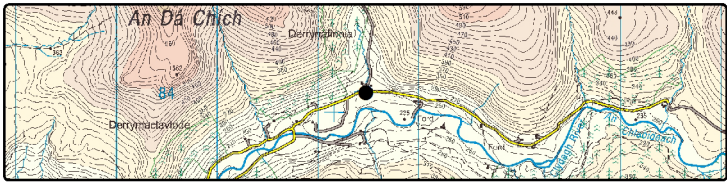
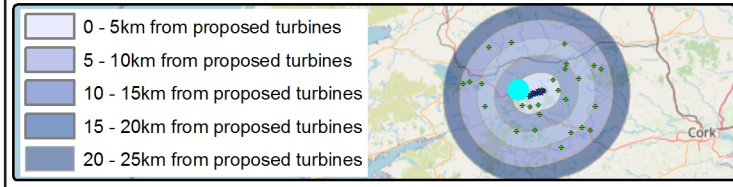
Focal Length: 50mm



Cummeennabuddoge Wind Farm – Visual Impact Assessment

(VRP 5) Figure 2

View from the local road, in the townland of Derrynafinnia



Viewing Instructions

Angle of View of Panorama: 53.5° (planar projection)
Principal Distance (printed at 84 x 29.7cm): 81.25cm

Viewpoint Location & Capture Information

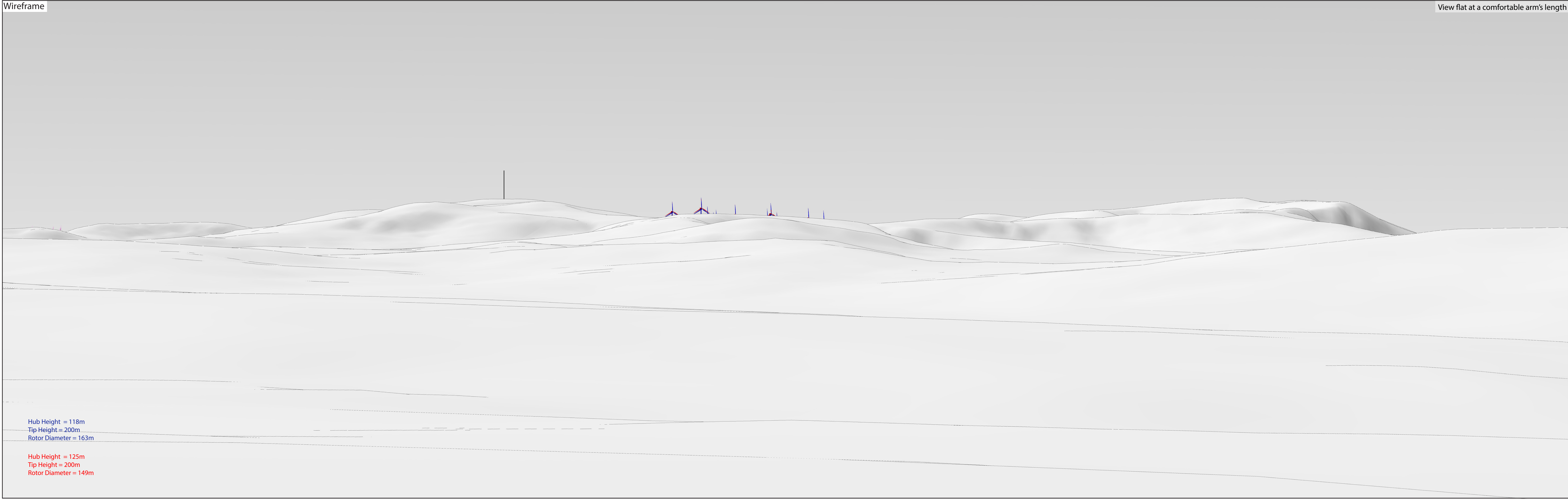
Location (ITM): 514439.68, 584063.09
Camera Level (Metres Above Ordnance Datum): 248.3
Date & Time: 05/05/2021, 7:00pm
Weather Conditions: Sunny

Visibility Information

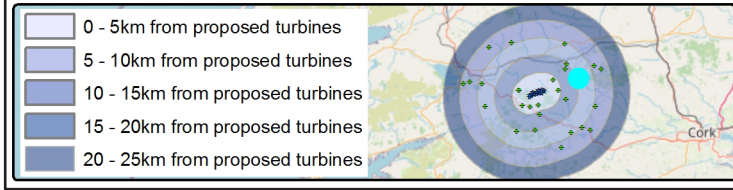
Distance to Nearest Proposed Turbine (km): 3.6
Nearest Turbine: T 17
Number of Proposed Nacelles Visible: 5
Direction of View (From Grid North): 115°

Camera Information

Camera: Canon 5D Mark IV
Lens: Canon EF 50mm f/1.4 USM
Focal Length: 50mm



Cummeennabuddoge Wind Farm – Visual Impact Assessment
(VRP10) Figure 3
View from the L1123 (scenic route), in the townland of Tullig

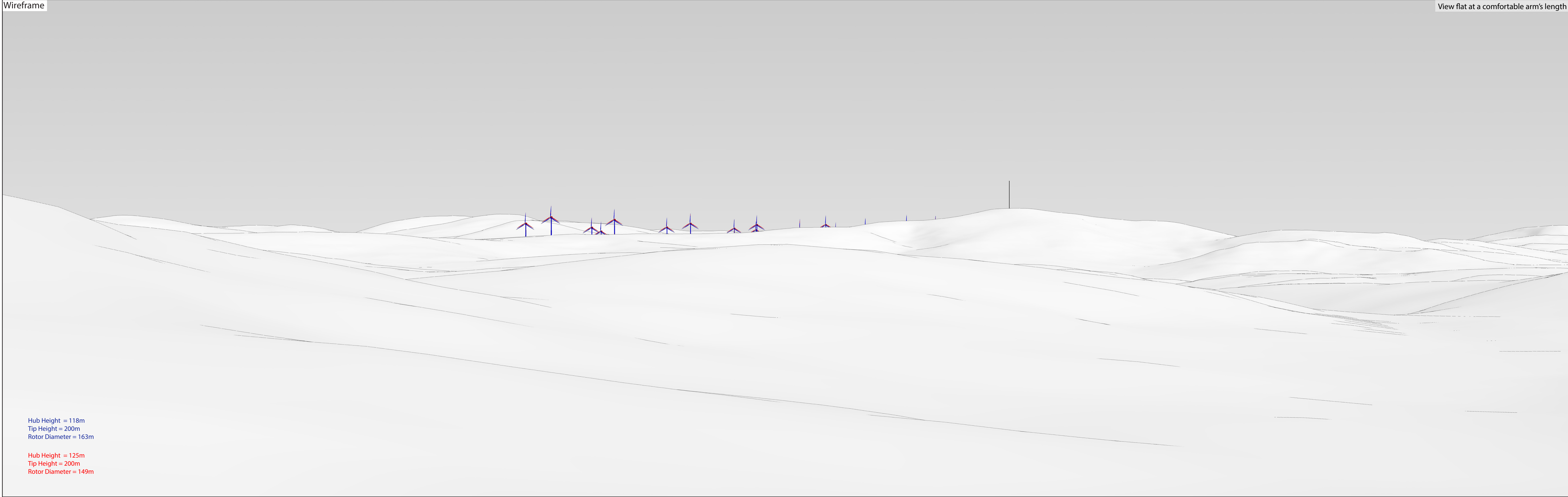


Viewing Instructions
Angle of View of Panorama: 53.5° (planar projection)
Principal Distance (printed at 84 x 29.7cm): 81.25cm

Viewpoint Location & Capture Information
Location (ITM): 532055.00, 587306.85
Camera Level (Metres Above Ordnance Datum): 273.1
Date & Time: 05/06/2021, 8:06am
Weather Conditions: Sunny

Visibility Information
Distance to Nearest Proposed Turbine (km): 10.7
Nearest Turbine: T2
Number of Proposed Nacelles Visible: 3
Direction of View (From Grid North): 250°

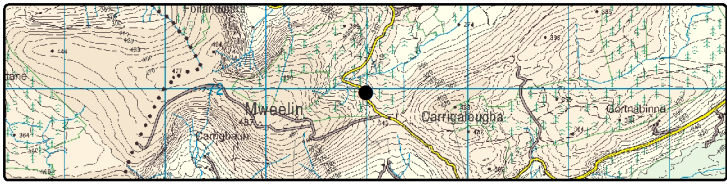
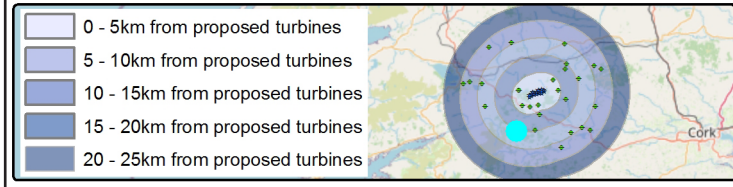
Camera Information
Camera: Canon 5D Mark IV
Lens: Canon EF 50mm f/1.4 USM
Focal Length: 50mm



Cummeennabuddoge Wind Farm – Visual Impact Assessment

(VRP 11) Figure 4

View from local road (scenic route), in the townland of Fuhiry



Viewing Instructions

Angle of View of Panorama: 53.5° (planar projection)
Principal Distance (printed at 84 x 29.7cm): 81.25cm

Viewpoint Location & Capture Information

Location (ITM): 513952.31, 572027.85
Camera Level (Metres Above Ordnance Datum): 345.8
Date & Time: 05/04/2021, 4:05pm
Weather Conditions: Sunny

Visibility Information

Distance to Nearest Proposed Turbine (km): 10.6
Nearest Turbine: T 16
Number of Proposed Nacelles Visible: 11
Direction of View (From Grid North): 23°

Camera Information

Camera: Canon 5D Mark IV
Lens: Canon EF 50mm f/1.4 USM
Focal Length: 50mm